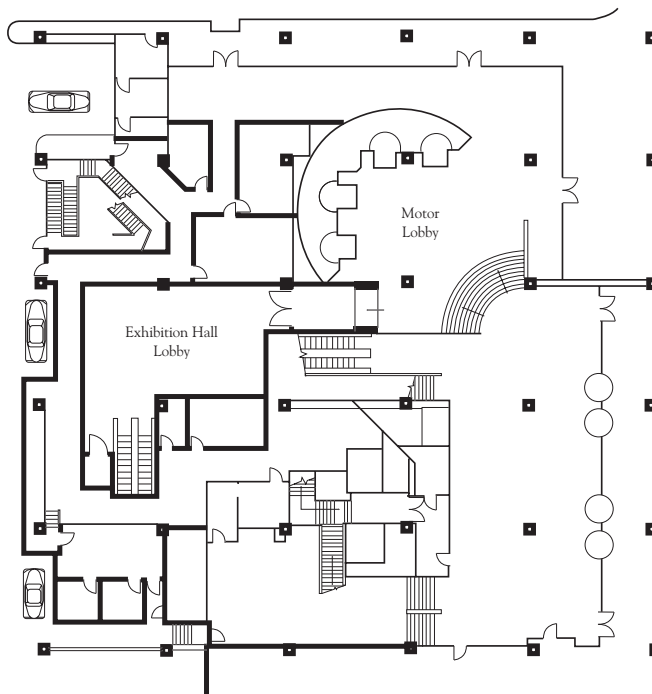


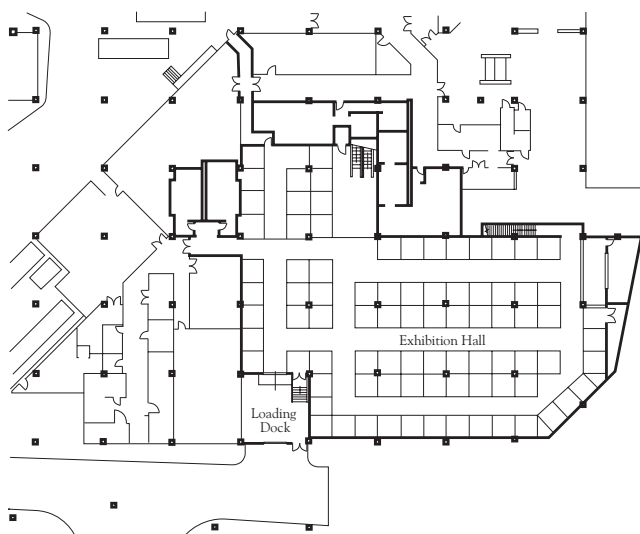
CONFERENCE SPECIFICATIONS



South Tower  
Lower Lobby Level



Exhibition Hall

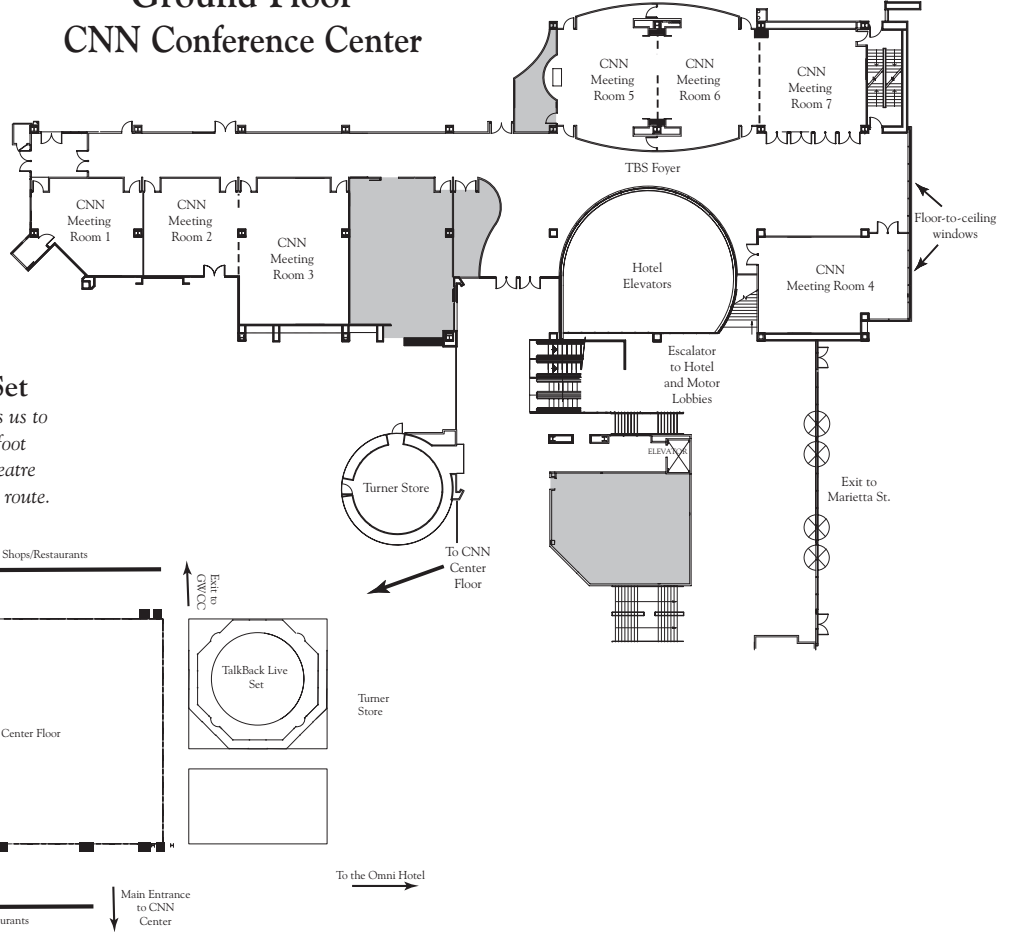


Exhibition Hall Specifications

Room	Floor #	Square Footage	Dimensions	Ceiling Height	Floor Covering	Portable Walls	Theater	Banquet 72"	Reception	Exhibits	
										8'x10'	10'x10'
Exhibition Hall	S	15,000	Irregular	12'	Carpet	No	1,500	1,200	1,500	115	85

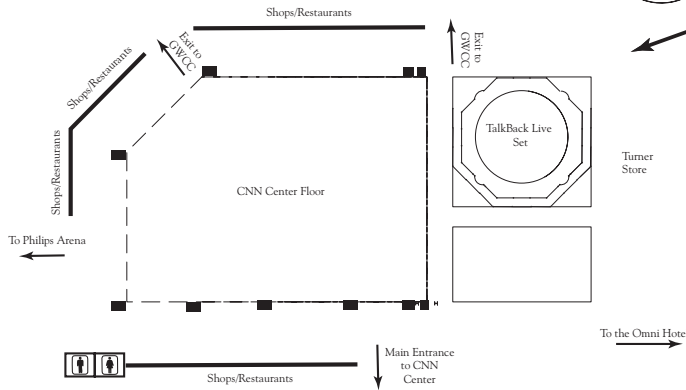
CONFERENCE SPECIFICATIONS

South Tower  
Ground Floor  
CNN Conference Center



**CNN Center Floor & TalkBack Live Set**

Our exclusive partnership with Turner Broadcasting enables us to offer and cater creative venues utilizing the 10,350 square-foot main floor of the CNN Center, TalkBack Live Set amphitheatre and two unique spaces located along the CNN Studio Tour route.



CNN Conference Center Specifications

Room	Floor #	Square Footage	Dimensions	Ceiling Height	Floor Covering	Portable Walls	Theater	Schoolroom 18"	Banquet		Reception	Hollow Square	Exhibits	
									60"	72"			8'x10'	10'x10'
CNN Meeting Room 5-6-7	G	3,344	88'x38'	15'	Carpets	Yes	280	150	-	230	300	-	-	-
CNN Meeting Room 5	G	1,176	28'x42'	15'	Carpets	Yes	100	50	-	80	110	35	-	-
CNN Meeting Room 6	G	1,260	30'x42'	15'	Carpets	Yes	110	60	-	90	120	40	-	-
CNN Meeting Room 7	G	870	30'x29'	15'	Carpets	Yes	70	40	-	60	70	25	-	-
CNN Meeting Room 2-3	G	2,030	58'x35'	10'	Carpets	Yes	170	90	-	110	170	-	-	-
CNN Meeting Room 2	G	756	27'x28'	10'	Carpets	Yes	50	36	-	40	50	15	-	-
CNN Meeting Room 3	G	1,302	31'x42'	10'	Carpets	Yes	120	60	-	70	120	40	-	-
TBS Foyer	G	2,000	-	15'	Marble	No	-	-	-	80	175	-	10	8
CNN Meeting Room 4	G	1,161	27'x43'	15'	Carpets	No	100	60	-	70	110	35	-	-
CNN Meeting Room 1	G	744	31'x24'	10'	Carpets	No	50	20	-	30	15	-	-	-
CNN Center Floor	-	10,357	90'x115'	15 Stories	Marble	No	-	-	-	850	1,105	-	-	-
TalkBack Live Set	-	2,875	-	15 Stories	Carpets	No	125	-	-	-	-	-	-	-
CNN Tour Exhibit Area	-	1,748	38'x46'	-	Carpets	No	-	-	-	-	75	-	-	-
CNN Tour 7th Fl. Terrace	-	900	30'x30'	-	Carpets	No	-	-	-	60	90	-	-	-

Meeting room capacities are determined by use of the "Arranger & Comfort Calculator," a standardized meeting room capacity measurement system used by Meeting Professionals International. 72" banquet capacities are based on 10 persons per table.